

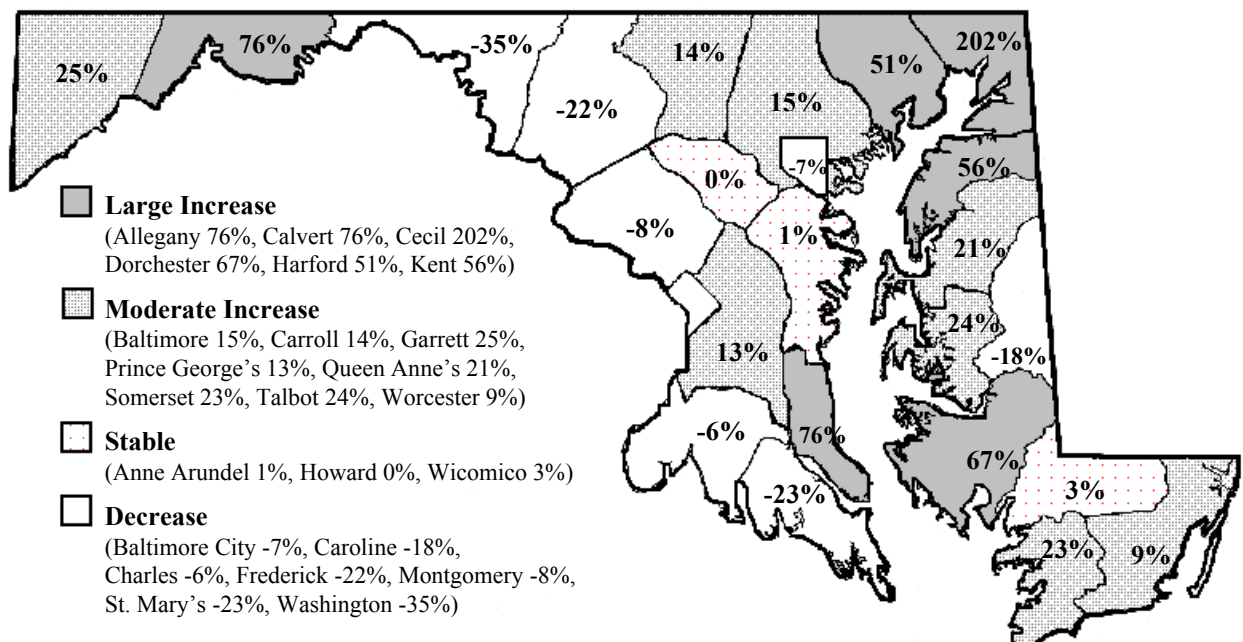
A Weekly FAX from the Center for Substance Abuse Research

University of Maryland, College Park

Heroin-Related Treatment Admissions Increase in Majority of Maryland Counties; Decrease in Baltimore City

Treatment programs in 15 Maryland counties reported increases in the number of heroin-related treatment admissions in fiscal year 1997, according to data from the Maryland Alcohol and Drug Abuse Administration. Cecil county experienced the greatest increase in heroin-related admissions (202%, from 46 admissions in FY96 to 139 in FY97), followed by Allegany (76%), Calvert (76%), Dorchester (67%), Kent (56%), and Harford (51%) counties. In contrast, the number of heroin-related admissions in Baltimore City declined by 7%. However, Baltimore City continues to account for the largest proportion of heroin-related admissions statewide (68%). In response to changes in heroin use patterns such as these, Maryland's Cabinet Council on Criminal and Juvenile Justice established the State Heroin Action Plan, designed to prevent the spread of heroin use in Maryland and increase the availability of treatment for heroin addiction. A full description of the Heroin Action Plan can be found in the *Maryland Crime Control and Prevention Strategy, 1998 Edition*. Copies of the *Strategy* are available from the Governor's Office of Crime Control & Prevention at 410-321-3521.

Percentage Increase in the Number of Heroin-Related Treatment Admissions, Maryland, FY1996 to FY1997



SOURCE: Adapted by CESAR from the Alcohol and Drug Abuse Administration, Maryland Department of Health & Mental Hygiene, "Trends and Patterns in Maryland Alcohol & Drug Abuse Treatment, Fiscal Year 1997." For more information, contact the Management Information Services Division at 410-767-6886.